

Light + Nature School

Tyler J. Rush

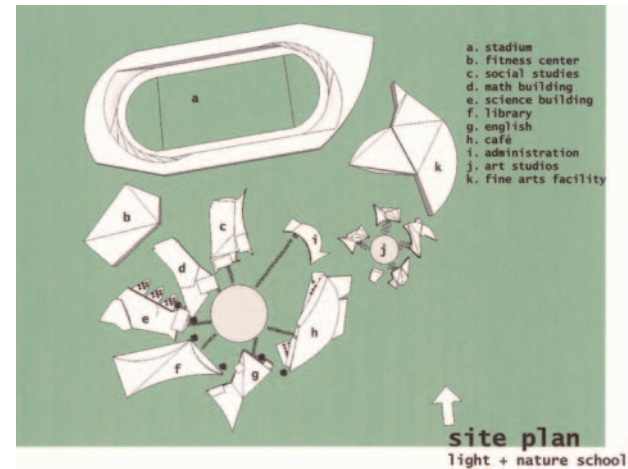
Age: 18
Westlake High School
Austin, TX

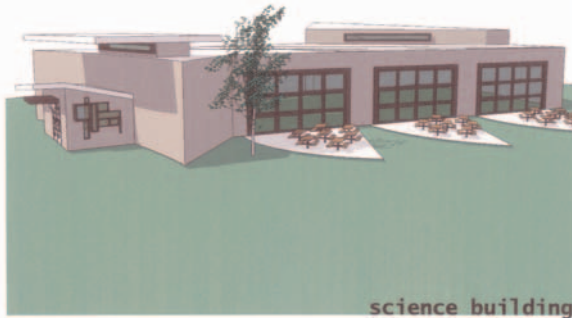
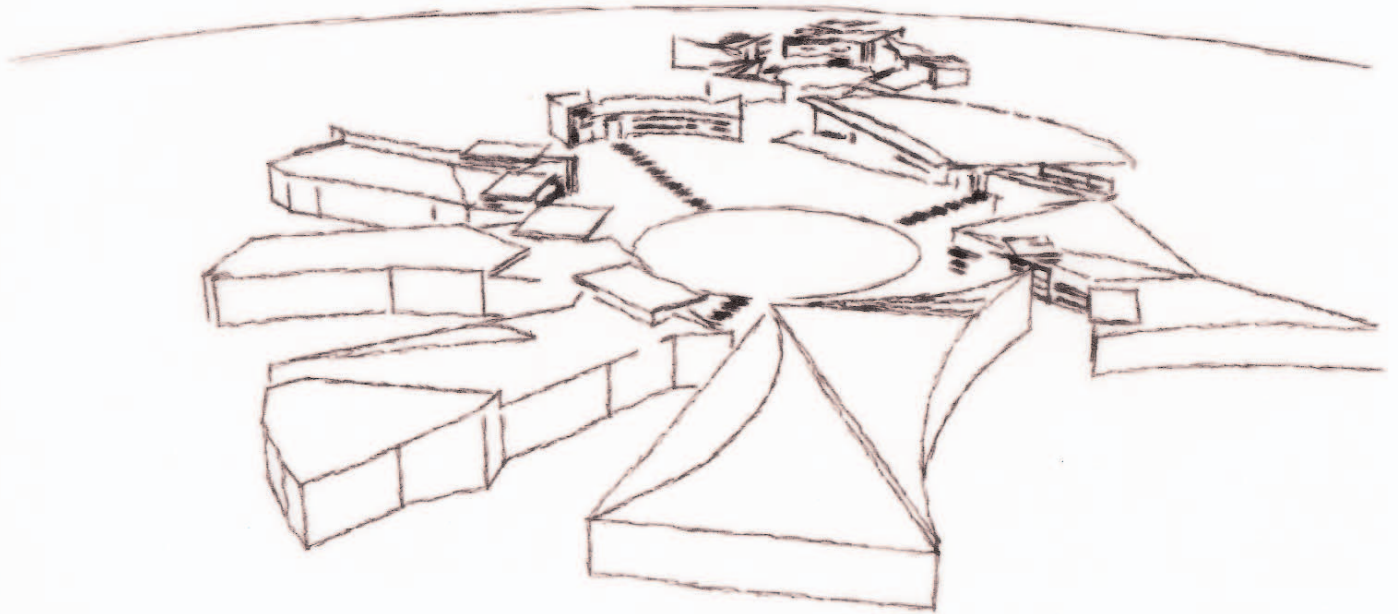
Jury comment:

“The design of the Light + Nature School shows thoughtful and creative consideration about how the schools of the 21st century might look and function—every detail is considered and the project could be successfully built today. The principles of sustainable design are carefully integrated into the project and enliven its design.”

Tyler Rush’s Grand Prize winning entry presents a vision of his ideal school, located in the Hill Country of central Texas, that incorporates “as many of the elements of the outdoors as possible.” The drawings and text focus attention on the principles of sustainability, various learning styles and classroom flexibility, and cutting edge technology. Buildings inspired by organic forms surround gathering spaces where students can interact and learn from one another both during school hours and after hours, as the school also serves as a center

of community. The sophisticated drawings of buildings that allow for light, air, and nature to be part of the learning process led the jury to remark that “this is a project that is both fanciful and practical—it could be built today.”





“ The Light + Nature School was designed to incorporate as many of the elements of the outdoors as possible, something that schools today lack. ”

-Tyler Rush